

HOW TO: Recreate Safely and Responsibly

IN GRAND
STAIRCASE
ESCALANTE
NATIONAL
MONUMENT



A Wild and Remote Place

Grand Staircase-Escalante National Monument is a wild and remote place. It is important to be prepared for your trip and aware of all regulations when visiting and recreating on the Monument. This brochure lists some good things to keep in mind when visiting Grand Staircase-Escalante, but is by no means a complete list.

At 1.9 million acres, Grand Staircase Escalante is a huge national monument and the weather can vary widely from one end of the monument to the other. With its large range in elevation and its accessibility year round, temperatures and weather patterns can also be quite unpredictable. It is important when visiting GSENM that you are prepared and knowledgeable when it comes to extreme weather and flood hazards in the desert.

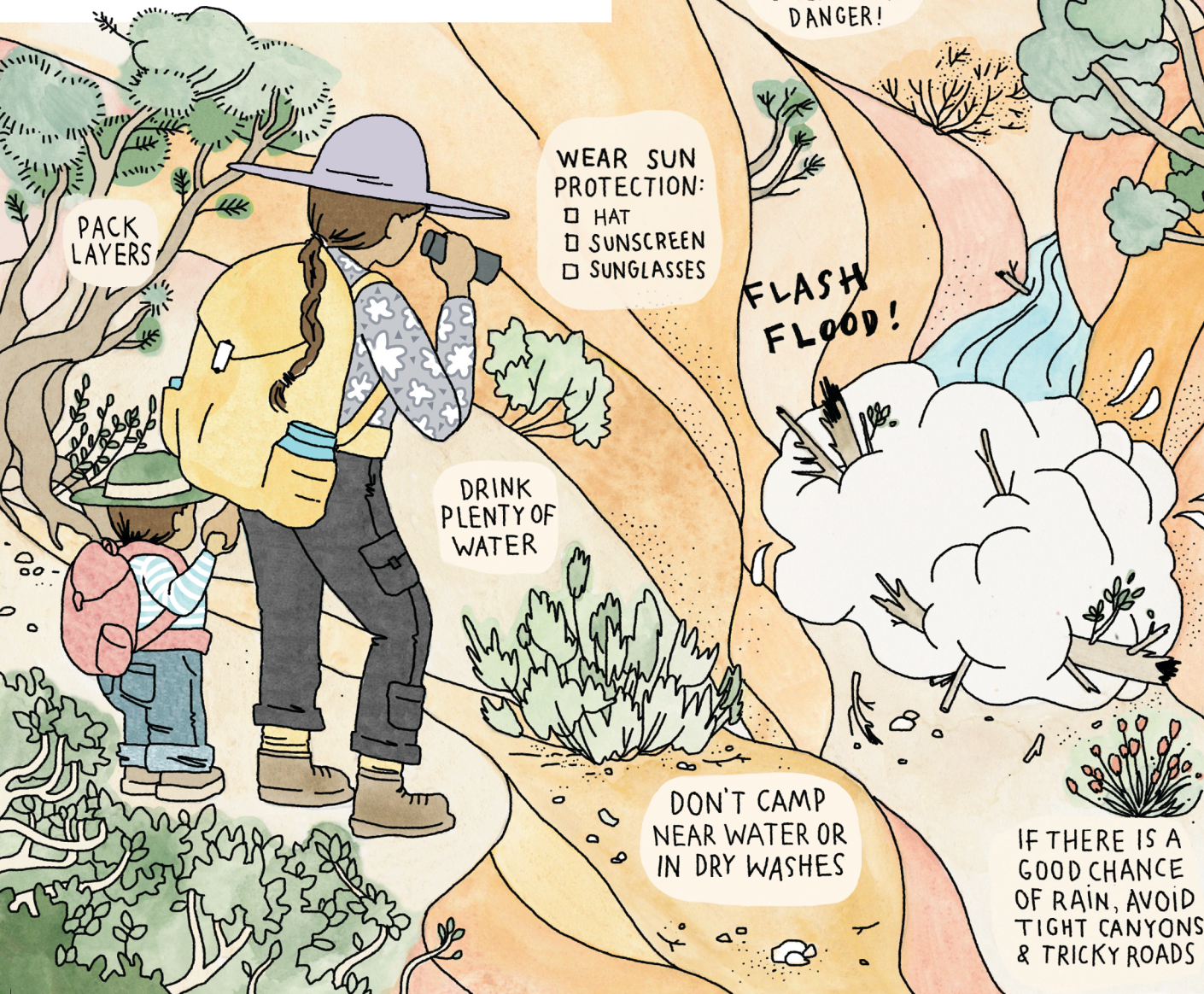


www.gsenm.org

Keep An Eye On The Sky!

The most deadly thing in the monument is exposure to extreme temperatures. Summer temperatures can rise above 100° Fahrenheit and in the winter can drop below 0°. To recreate safely, pack layers, wear sun protection, and drink plenty of water. During the summer, it is recommended to drink 1 gallon of water per person per day.

Another hazard that is unique to the area is flash floods. Flash floods occur when rainfall from heavy rainstorms causes streams, rivers, and dry washes to fill with water. These flood waters often contain debris. Entering them can be very dangerous. In areas such as slot canyons, flash flood waters can rise so rapidly that they become deadly.



Regulations:

- Collecting is not allowed in the Monument. All things (rocks, fossils, plants, bones, signs, wood, etc.) must be left where they are found and in the condition they were found in.
- Backcountry overnight users must have a permit. These can be acquired at any of the BLM Visitor Centers around the monument or at many of the trailheads.
- Groups are limited to a certain size in all areas of the Monument. In most areas, one group cannot exceed 12 individuals.
- Fires are not permitted in Glen Canyon National Recreation Area and are strongly discouraged throughout the Monument. Make sure to check if there are fire restrictions in effect during your visit.
- Bathrooms on the monument are limited. There are outhouses available at Lower Calf Creek Falls Trailhead and at Upper and Lower Dry Fork Narrows Trailheads and at BLM Visitor Centers.
- All garbage must be PACKED OUT. There is no garbage disposal available in the Monument.

