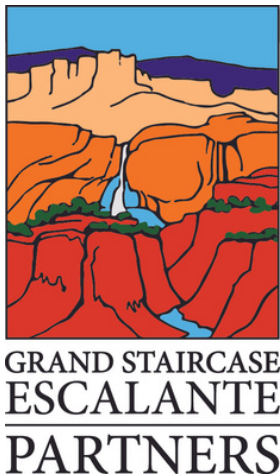


2024 ANNUAL REPORT



In 2024, Grand Staircase Escalante Partners (GSEP) continued to uphold its mission of protecting and preserving Grand Staircase-Escalante National Monument (GSENM). This year marked significant achievements in stewardship, conservation, science, and outreach. As we continue to protect GSENM, we are grateful for the hundreds of donors and volunteers who made this past year successful.

- GSEP Team



Voices of Our Volunteers

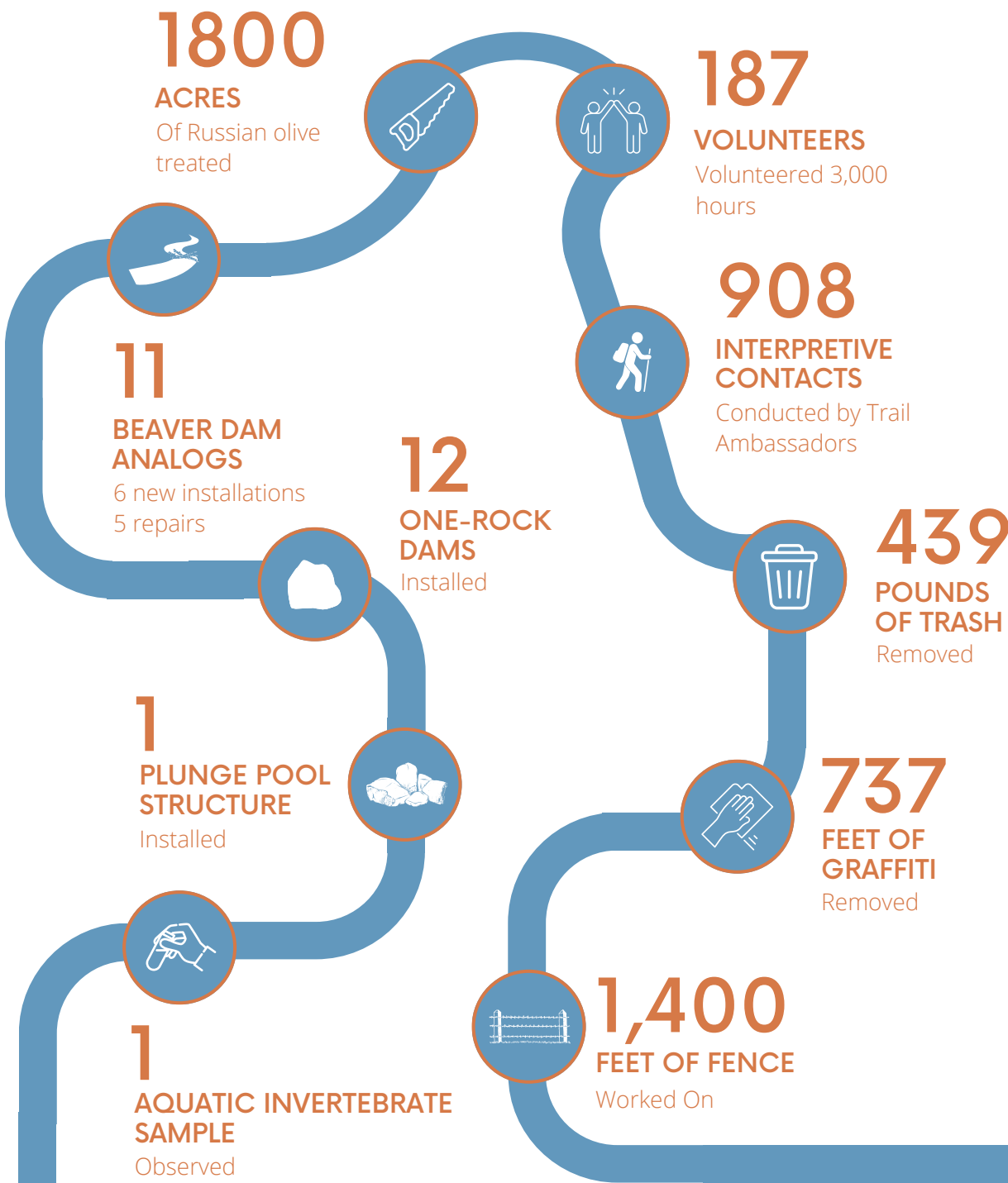
“The volunteer programs available through Grand Staircase Escalante Partners are innovative, fun, supportive, and make me feel like I'm actually making a difference. In public lands, it's easy to feel like we want to take action and not know how, and I'm grateful for the experiences I have had volunteering with GSEP, as they have strengthened my connection to this beautiful landscape, and makes me feel like I'm doing *something* when the world feels like it's melting down around us.”

- Sydney Williams
GSEP Partner & Founder, *Hiking My Feelings*

“Volunteering with GSEP was such a joy. The project brought together an awesome community of people who shared a love for the Monument. I walked away feeling as though I understood public lands better, and a warm, fuzzy feeling around getting to do helpful things with excellent people.”

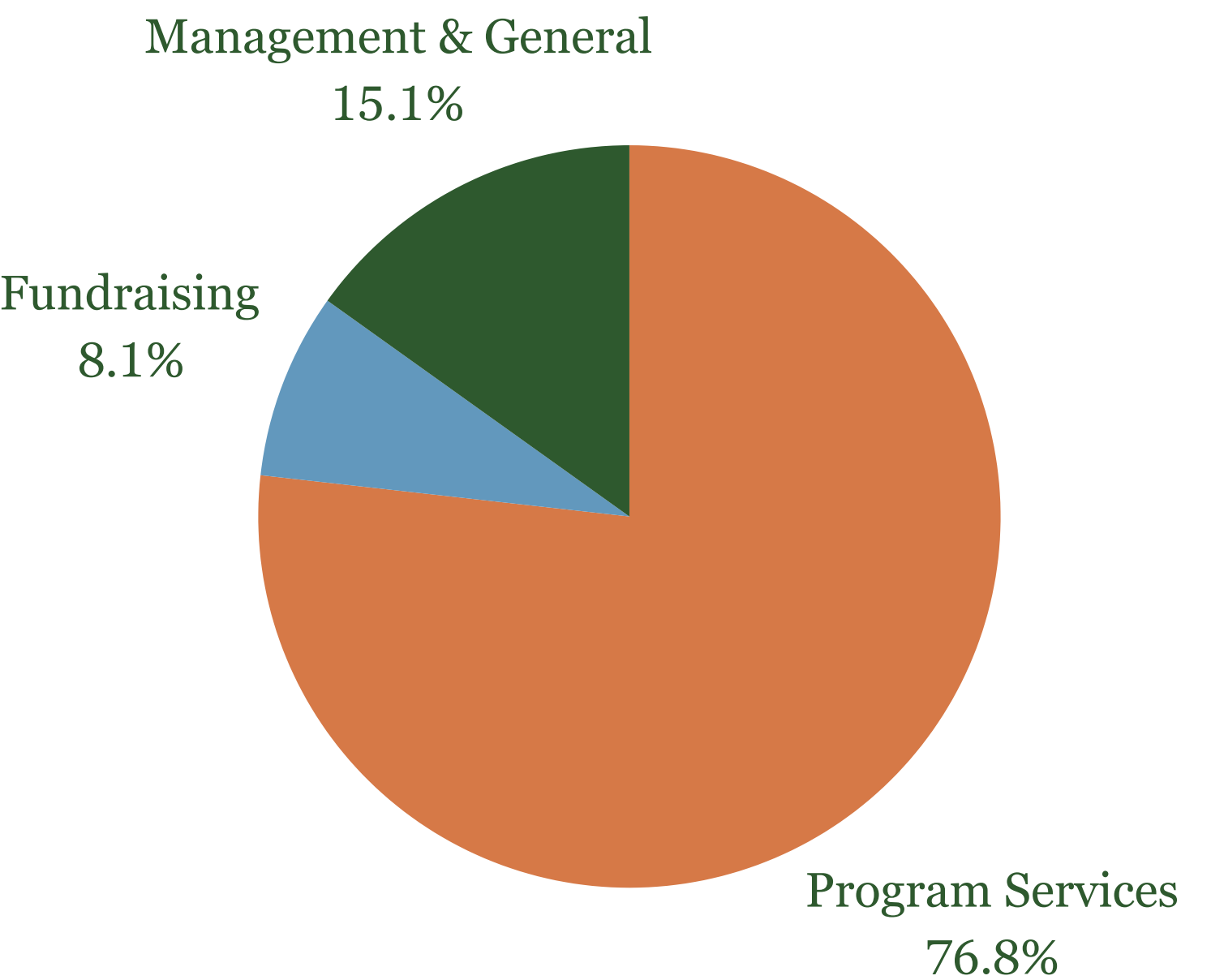
- Alexandra Bonham
GSEP Volunteer

2024 Program Highlights

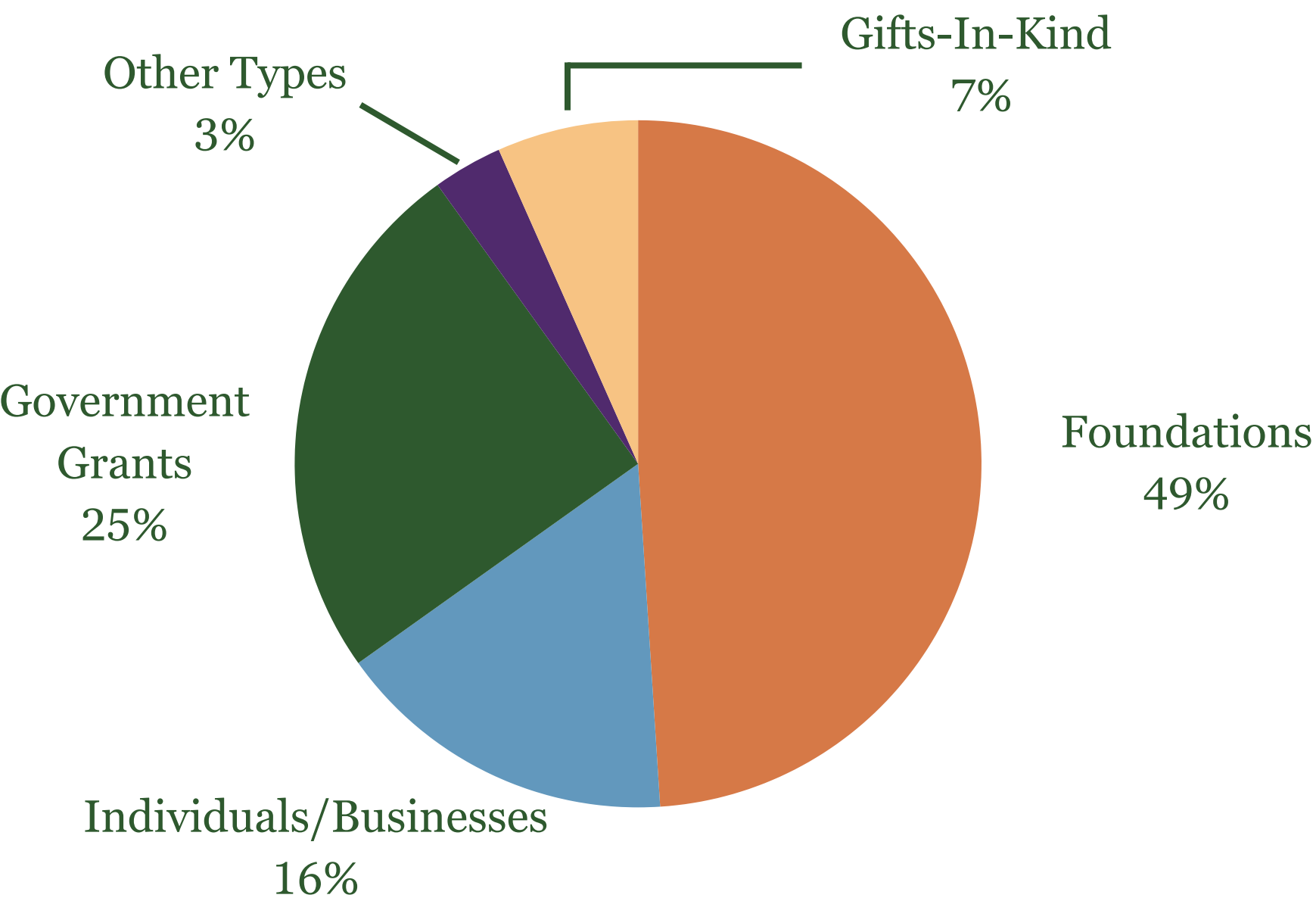


2024 Financials

Expenses



Income



MOMENTS THAT MATTERED



Hopi Pilot Partnership

GSEP hosted seven members of the Hopi Tribe in June. Our shared goals were to implement low-tech erosion controls and protect important desert springs, while connecting to the land with Hopi partners. This pilot project was a team effort led by our Tribal Liaison (Georgie Pongyesva), Conservation Programs Manager (Kevin Berend), and Stewardship Programs Manager (Kaitlin Martin). Kaitlin provided photos, and the Hopi participants were assisted by our Stewardship and Conservation staff.

Our Hopi partners were either young adults interested in building careers in natural resources, or Cultural Advisors who have extensive experience in Hopi cultural practices and knowledge or natural resource management, and some had extensive knowledge in both areas! We facilitated the partnership by providing transportation, food, lodging, camping equipment, and stipends (young adults) or honoraria (Cultural Advisors).

The pilot partnership resulted in protective fencing around an important spring, skill and knowledge sharing, and new friendships. Plans are in the works for continued partnerships with Hopi, Paiute, and other Native peoples. Look out for an announcement about another fencing project scheduled for August, 2025, and thanks for your support of our growing partnership program!

Growing Resilience with Native Plants

In July, the Deer Springs Fire burned over 11,000 acres in Grand Staircase-Escalante National Monument and adjacent landscapes. This fire was one of the largest on the Monument in decades. This fire was a reminder of our country’s need for native plants and their seeds to help recover from natural disasters.

Launched in 2024 through multiple grants awarded from the Bureau of Land Management and the U.S. Forest Service, GSEP’s native plants program engages seed crews, Tribal partners, and volunteers in the collection and cleaning of seeds from native plants on and around GSENM. By restoring native plant communities, we’re not just replanting vegetation—we’re rebuilding habitat, biodiversity, and resilience.

Congratulations to our team and to you, our supporters, for getting us to an incredibly productive year in 2024.

Jackie Grant, Executive Director

