

Ceratopsians Discovered in Grand Staircase-Escalante National Monument

Ceratopsians are an uncommon fossil in the badlands of Grand Staircase-Escalante National Monument (GSENM). However, in spite of being elusive, four unique species have been discovered in GSENM. ***These species are not found anywhere else in the world!*** When a paleontologist finds the skeleton of a ceratopsian, it can be difficult to identify which it is until the skull is found. All ceratopsians incorporate a similar body, but each ceratopsian has its own arrangement of horns and frill shape to distinguish it from the others. Check out the head gear of Grand Staircase-Escalante National Monument's own ceratopsians!

Diabloceratops eatoni "Devil Horned Face"



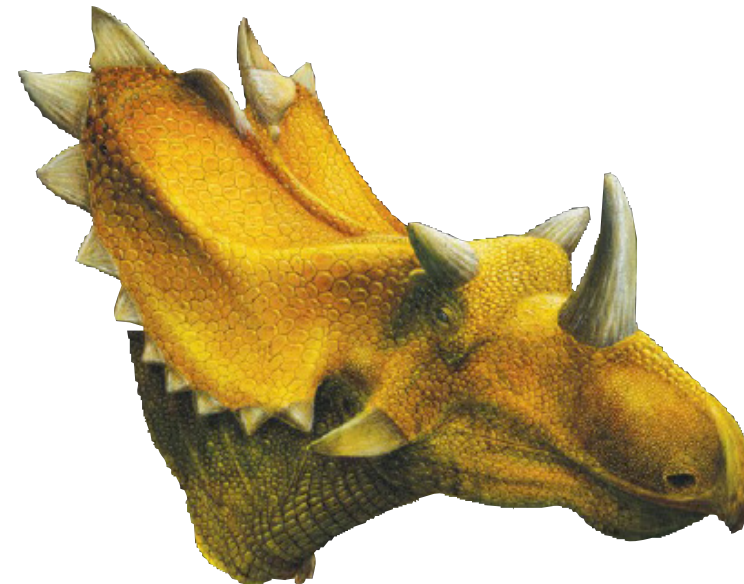
Height: 4 - 5 Feet
Length: 9 - 10 Feet
Weight: 1 - 2 Tons
Formation: Wahweap
Time of Death: 81 mya

Kosmoceratops richardsoni "Ornamented Horned Face"



Height: 4 - 6 Feet
Length: 9 - 20 Feet
Weight: 2 - 4 Tons
Formation: Kaiparowits
Time of Death: 75 mya

Utahceratops gettyi "Utah Horned Face"

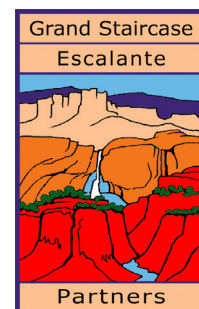


Height: 4 - 8 Feet
Length: 9 - 30 Feet
Weight: 3 - 5 Tons
Formation: Kaiparowits
Time of Death: 75 mya

Nasutoceratops titusi "Big Nose Horned Face"



Height: 4 - 6 Feet
Length: 9 - 15 Feet
Weight: 1 - 3 Tons
Formation: Kaiparowits
Time of Death: 75 mya



Volunteer in the GSENM paleo lab!
For more information call (435) 644-1308, email partners@kanab.net,
or visit us at gsenm.org and [facebook.com/GrandStaircaseEscalantePartners](https://www.facebook.com/GrandStaircaseEscalantePartners)